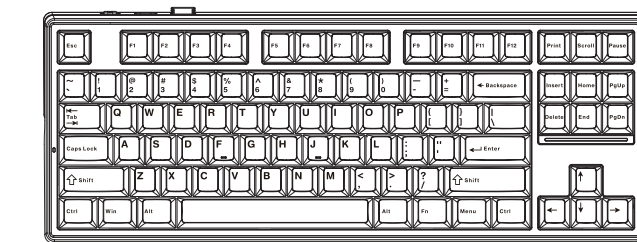


尺寸:100*100mm

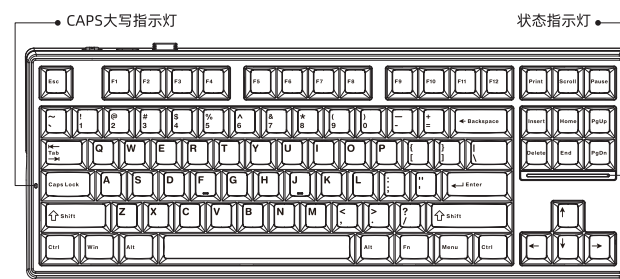
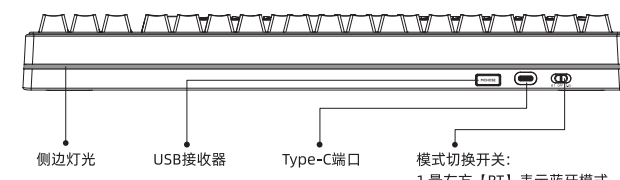
材质:100克双胶纸

双面印刷

MCHOSE 迈睿



— K87 用户指南 —
三模机械键盘



键盘关机: 需将键盘拨到 [OFF] 有线模式, 并拔掉端口连接, 即可关机。
键盘回报率: 有线模式 1000Hz, 2.4G模式 1000Hz, 蓝牙模式 125Hz。

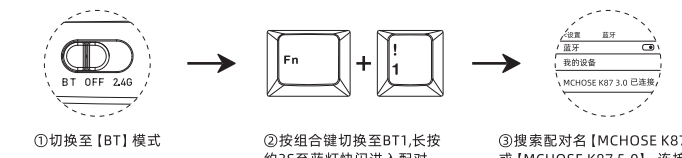
注意: 本说明书中的图片均为示意图, 可能与实物有偏差, 请以实物为准。

•2.4G连接



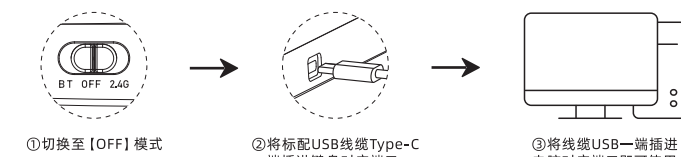
•手动对码: 上方开关拨到 [2.4G模式], 然后长按3s [FN+~], 【指示灯】绿灯快闪进入对码状态, 此时将USB接收器插入电脑端口, 【指示灯】恢复正常模式, 2.4G连接成功, 此时即完成对码。
注: 出厂默认已对码。

•蓝牙连接



蓝牙通道1、2、3配对名称均为 [MCHOSE K87 3.0] 或 [MCHOSE K87 5.0]。
蓝牙通道2组合键为 [FN+2@], 【指示灯】为紫灯;
蓝牙通道3组合键为 [FN+3#], 【指示灯】为青灯;
长按组合键约3s对应蓝牙通道指示灯快闪, 表示键盘进入对码或搜索模式, 即可在设备中进行配对连接;
按组合键Fn+数字键1、2或3可以切换设备。

•有线连接



•省电模式
键盘在无线模式下, 键盘无任何动作, 3分钟后背光关闭, 30分钟后蓝牙/2.4G断开, 按任意键回连。

•灯效说明

按 [FN+DEL] 组合键可切换16种灯效:
1. 常亮模式
2. 呼吸模式
3. 梦幻彩虹
4. 一帆风顺
5. 雨中散步
6. 涟漪扩散
7. 繁星点点
8. 川流不息
9. 烟花绽放 (默认)
10. 如影随形
11. 正转光波
12. 旋转风车
13. 七彩瀑布
14. 花开富贵
15. 游戏模式 默认 (四个方向键和W/A/S/D 和ESC共9键亮蓝色光) [配合驱动可以实现按键盘灯光颜色自定义]
16. 关灯

•Fn组合键说明

Table with 3 columns: 序号, 组合键, 功能. Lists 25 function key combinations and their actions.

•Windows系统: Fn组合键说明 (多媒体功能)

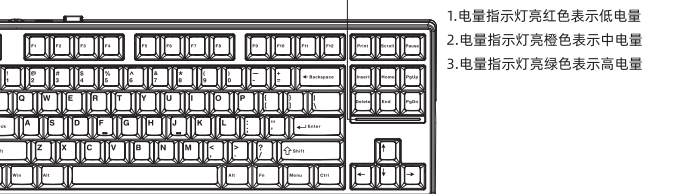
Table with 2 columns: 键位, 功能. Lists F1-F6 functions for Windows system.

•Mac系统: Fn组合键说明 (多媒体功能)

Table with 2 columns: 键位, 功能. Lists F1-F6 functions for Mac system.

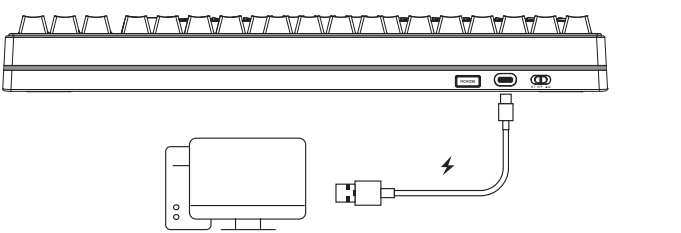
*在Windows系统下, 切换到Mac系统后将调Win和左Alt键。

•电量显示



在无线模式 (2.4G/BT) 且设备已连接状态下, 【状态指示灯】切换到常亮模式, 键盘会显示电量颜色。
(注:连接USB线时不可检测电量)

•充电



通过配备的USB线将键盘与电脑连接, 即可为键盘充电, 充电过程中【状态指示灯】从左到右快速流动, 充满后【状态指示灯】恢复正常灯效, 充电灯效只在【状态指示灯】为常亮模式下显示。
当【状态指示灯】亮红灯时, 请及时给键盘进行充电。

•规格参数

产品型号: K87
传输方式: 蓝牙/2.4G/有线
充电接口: Type-C
电池容量: 6000mAh可充电锂电池
充电电压/电流: DC 5V=800mA

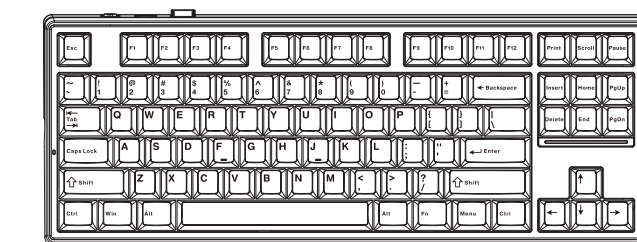
保修卡

感谢您购买本公司产品, 在保修期内如果产品出现任何质量问题, 请联系我们。联系时请提供此保修卡, 以便我们为您提供完善的售后服务。

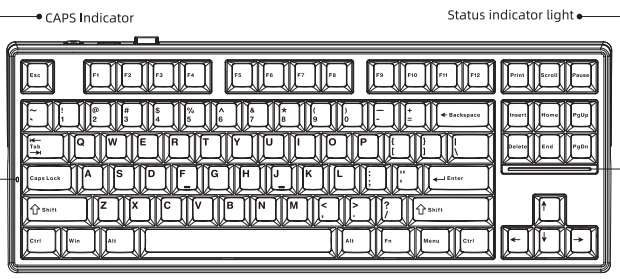
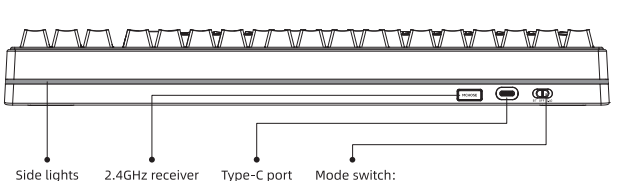
Warranty card form with fields for Product Model, User Name, Factory No., Warranty address, Purchase Date, Warranty Contact, Purchase Address, Contact Number, Sales clerk, and Mail editor.



MCHOSE



— K87 User Guide —
MECHANICAL KEYBOARD



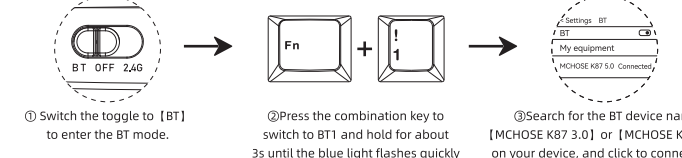
Keyboard turning off: Switch the toggle to [OFF] and unplug the cable to disconnect.
Keyboard return rate: Wired mode 1000Hz, 2.4G模式 1000Hz, Bluetooth mode 125Hz。
The combination key of BT channel 3 is [FN+3#], and the indicator light is blue:
Press the combination key and hold for about 3 seconds until the corresponding BT channel indicator light flashes quickly, indicating that the keyboard has entered detect pairing or search mode, and can be paired and connected to the device.
Please refer to the actual product for accuracy.

•2.4G CONNECTION



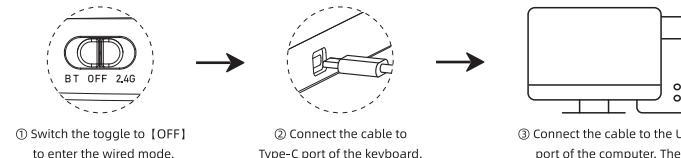
•Manual pairing dongle: Switch the toggle to the position [2.4G] to enter 2.4GHz mode. Press [FN+~] and hold for 3 seconds. The indicator will quickly flash GREEN to enter the pairing mode. Plug the included dongle into the desired device. [Indicator light] will become normal when the 2.4GHz wireless mode connect successful.
Note: The dongle is default paired.

•BT CONNECTION



The BT device names for channels 1, 2, and 3 are [MCHOSE K87 3.0] or [MCHOSE K87 5.0].
•The combination key of BT channel 2 is [FN+2@], and the [Indicator light] is purple:
•The combination key of BT channel 3 is [FN+3#], and the indicator light is blue:
Press the combination key and hold for about 3 seconds until the corresponding BT channel indicator light flashes quickly, indicating that the keyboard has entered detect pairing or search mode, and can be paired and connected to the device.
•Press the combination key "Fn" + number keys "1", "2", or "3" to switch devices.

•WIRED CONNECTION



•POWER SAVING MODE
In wireless mode, the keyboard backlight will turn off after 3 minutes of sitting idle. And the keyboard will disconnect with the device after 30 minutes of sitting idle. Press any button to wake it up.

•BACKLIGHT EFFECT

Press the [FN+DEL] key combination to switch 16 RGB backlights and light off:
1. Constant light mode
2. Breathing pattern
3. Dream Rainbow
4. Immediate trigger
5. Taking a walk in the rain
6. Ripple diffusion
7. Starry dots
8. Flowing endlessly
9. Go with the flow (default)
10. Accompanied like a shadow
11. Positive dazzling light wave
12. Rotating Windmill
13. Rainbow Waterfall
14. Flowers bloom for wealth and prosperity
15. Game mode default (four directional keys and a total of 9 keys for W/A/S/D and ESC to light up blue light)
(Combined with the driver, button light color customization can be achieved)
16. Turn off the lights

•FN KEY COMBINATION DESCRIPTION

Table with 2 columns: Combination key, function. Lists 25 function key combinations and their actions.

•WINDOWS SYSTEM: FN KEY COMBINATION INSTRUCTIONS (MULTIMEDIA FUNCTIONS)

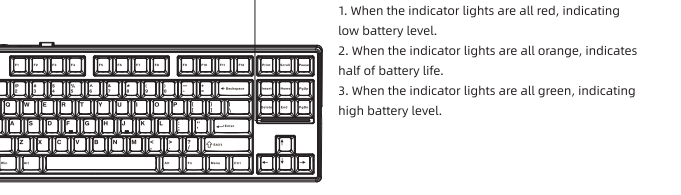
Table with 2 columns: Key position, function. Lists F1-F6 functions for Windows system.

•MAC SYSTEM: FN KEY COMBINATION INSTRUCTIONS (MULTIMEDIA FUNCTIONS)

Table with 2 columns: Key position, function. Lists F1-F6 functions for Mac system.

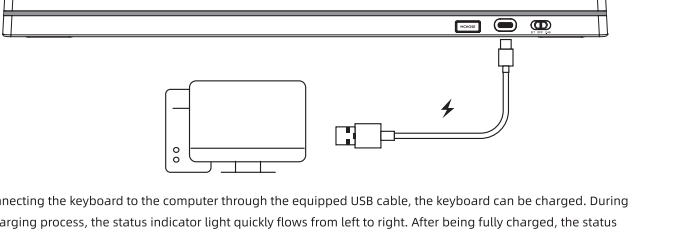
*In the Windows system, after switching to the Mac system, the Win and Left Alt keys will be swapped.

•POWER DISPLAY



When in wireless mode (2.4GHz/BT) and the device is connected, the status indicator light switches to the normally light on mode, and the keyboard will display the battery life. (Note: The battery life cannot be detected when connecting the USB cable)

•CHARGING



By connecting the keyboard to the computer through the equipped USB cable, the keyboard can be charged. During the charging process, the status indicator light quickly flows from left to right. After being fully charged, the status indicator light returns to normal light effect, and the charging light effect is only displayed when the status indicator light is in a constant light mode.
When the ambient light bar is fully red, please charge the keyboard on time.

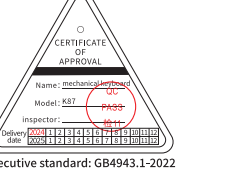
•SPECIFICATION

Product model: K87
Connectivity: Bluetooth/2.4GHz/Wired
Charging interface: Type-C
Battery capacity: 6000mAh rechargeable lithium battery
Charging voltage/current: DC 5V=800mA

WARRANTY CARD

Thank you for purchasing our products. If there are any quality problems during the warranty period, please contact us. Please provide this warranty card when contacting, so that we can provide you with perfect after-sales service.

Warranty card form with fields for Product Model, User Name, Factory No., Warranty address, Purchase Date, Warranty Contact, Purchase Address, Contact Number, Sales clerk, and Mail editor.



INSTRUCTIONS FOR CHARGING

- 1. It is recommended to charge the keyboard only using the USB interface of the computer;
- 2. Do not use the fast charger to charge the keyboard;
- 3. Do not use poor quality non-standard power adapter to charge the keyboard;
- 4. Do not use the overvoltage and overcurrent power adapter to charge the keyboard;
- 5. Keep away from high temperature devices when charging;
- 6. Turn off the power switch when not in use for a long time.

The above charging instructions also apply to other devices with charging function (keyboard/mouse/headset/speaker, etc.)